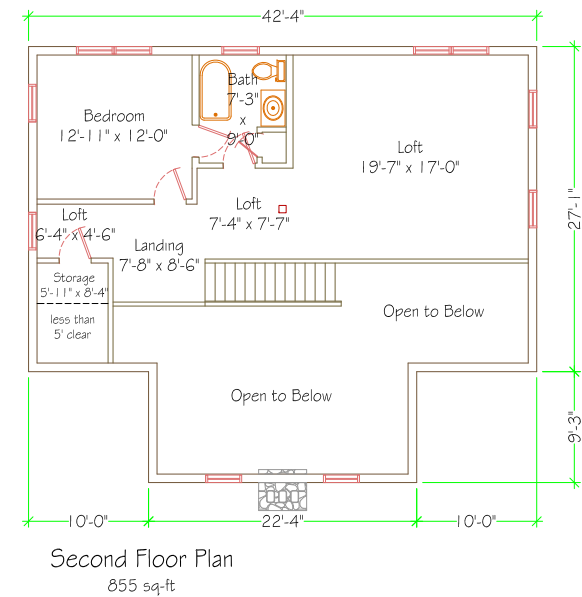
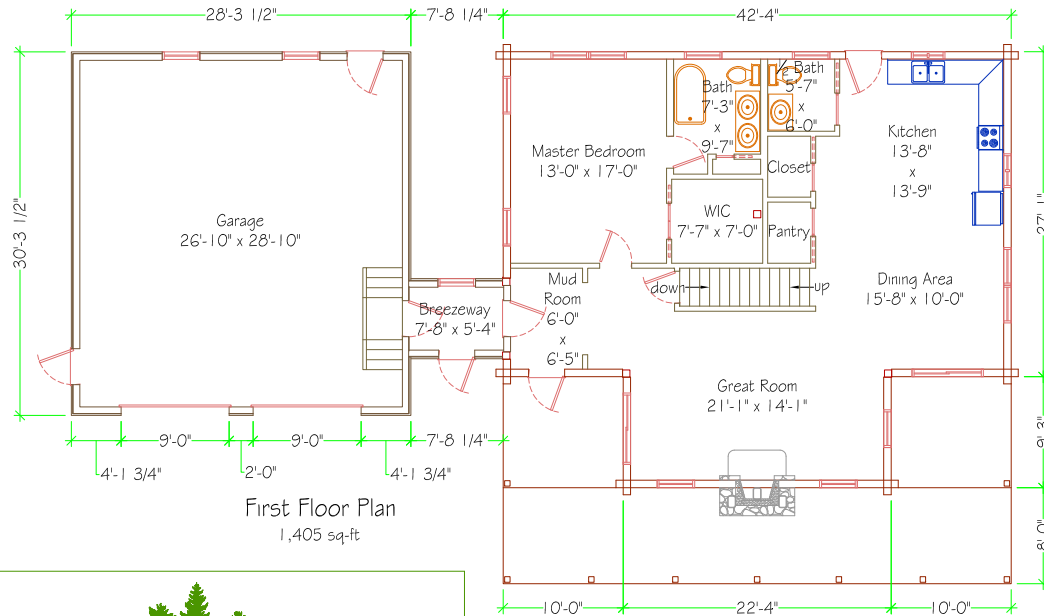
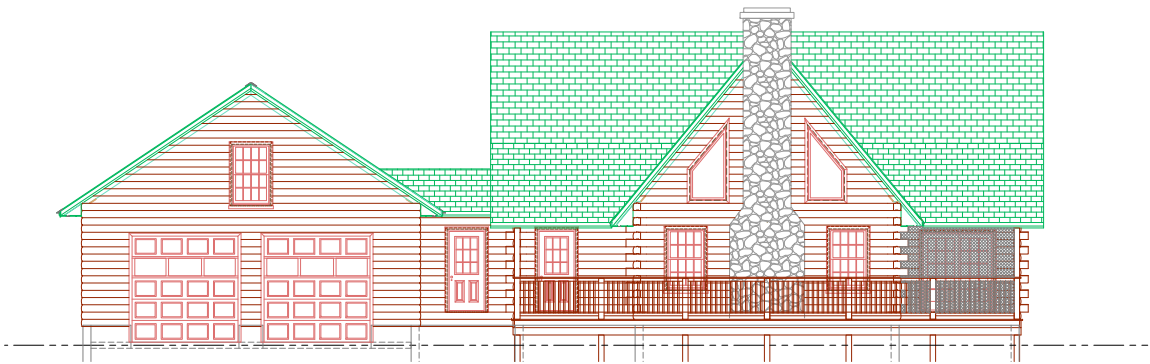


"Knollwood II"

2,260 sq-ft Living Space
 Two Bedroom / Two and a Half Bath
 (Also as Three or Four Bedroom)
 Open Concept Kitchen / Dining Area
 Cathedral Ceiling
 Covered Porch and Screened Porch
 Full Width Front Deck
 Breezeway to Two-Car Garage



www.kingforesthomes.com
 Tel. (603)536-5361 Fax (603)536-5731